

## Contact us ...

2nd Floor, New Alderley House, Macclesfield District General Hospital,  
Victoria Road, Macclesfield, SK10 3BL

Tel: **01625 66 1362** :: Email: **ecn-tr.stafflibrary@nhs.net**

### Training

Unsure how to start an evidence search?  
Need more information or help using a resource? We offer tailored 1:1 training sessions for all Trust staff. Contact us to discuss how we can help you.

The Library has a wide selection of books which can be borrowed.



### How else can we help you?

**Evidence searching service:** do you need to do a work-related evidence search? Save your time and we can do it for you!

**Support and advice** for research and information enquiries.

**Training:** we offer a variety of courses - evidence searching (basic and advanced level); finding journal articles; critical appraisal; and using social media in the workplace. Training can take place in the Library or your place of work.

**Inter-library loans** for items not available here.



[www.eastcheshirehslibrary.net](http://www.eastcheshirehslibrary.net)

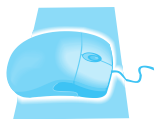


# Resources



## Dentists

July 2018



Do you want fast, easy access to a trusted evidence-based clinical decision support tool? Why not download the BMJ Best Practice app! Access with your NHS Athens account. <http://bestpractice.bmj.com> Access free CME and CPD through BMJ Learning. Accredited evidence based learning modules on a wide variety of clinical topics, professional skills and career development. Login with your Athens account, then create a BMJ account to save your learning to your personal portfolio. <http://learning.bmj.com>

**Databases & Evidence** - access Medline, Embase, Cochrane Library and the other key healthcare databases (<https://hdas.nice.org.uk>). Direct links to the fulltext of articles. NICE Evidence, NICE Guidance and guidelines ([www.evidence.nhs.uk](http://www.evidence.nhs.uk)). Login with your Athens account. Free refresher and advanced evidence search training is available, along with Cochrane and Critical Appraisal training.



UpToDate®

Access **UpToDate** evidence-based clinical decision support tool. Login with your NHS Athens account [www.uptodate.com](http://www.uptodate.com) from work or home.

A lot of resources are only available to subscribers. **Athens** is the key to unlocking access - register free! [openathens.nice.org.uk](http://openathens.nice.org.uk)

**Books** - search the Library catalogue: [macle.cirqa hosting.com](http://macle.cirqa hosting.com)

**eBooks** - access over 500 e-books 24/7! Access from anywhere with your NHS Athens account. Search all our e-book titles at: [eastcheshirehsebooks.wordpress.com](http://eastcheshirehsebooks.wordpress.com)

Access all our journals full text online at <http://browzine.com/libraries/1293> or download the app.



Search by journal title & browse to the journal, issue and article you want. Click on the article title, then enter your Athens details to view the full text. Save your favourite journals & articles.

**KnowledgeShare** is our targeted current awareness service. Let us know what your specific clinical interests are and we'll email you fortnightly with links to high-impact publications in your specific areas of interest. We also produce monthly and bi-annual **Updates** and **Bulletins** in broader subject areas. More information and the sign-up sheet are available on the Library website:

[www.eastcheshirelibrary.net/keep-up-to-date.html](http://www.eastcheshirelibrary.net/keep-up-to-date.html)