



LIBRARY & KNOWLEDGE SERVICE



**LIBRARY
HANDBOOK**



WELCOME!

The Library & Knowledge Service is here to support evidence-based decision making at East Cheshire NHS Trust. We are a small, friendly team of information professionals who can facilitate access to evidence-based information to support clinical and corporate decision making. We provide access to a wide range of quality information resources, and tailored support for staff, whatever role you are in.

WWW.EASTCHESHIRENHS.LIBRARY.NET

The library is staffed Monday to Friday 8:30am to 4:30pm (excluding bank holidays). 24/7 access is available to all trust staff - just swipe in with your trust ID badge. Study facilities, PC access, and a self-service kiosk to issue or return books are all available 24/7.



Join the library today - complete the online registration form, or call into the library!

<https://now.koha-ptfs.co.uk/cgi-bin/koha/opac-memberentry.pl>



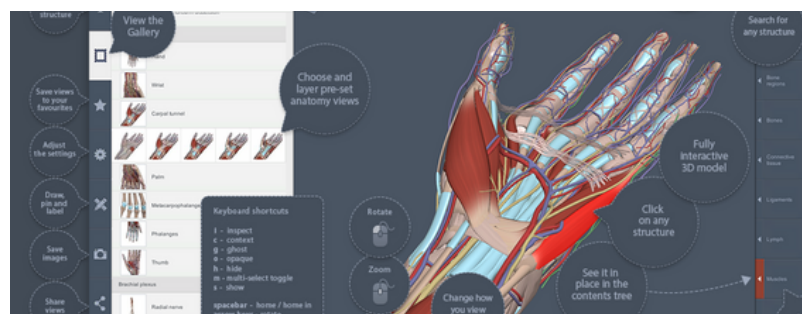
"The evidence search was undertaken and completed by Holly Cook, Clinical Librarian, and it provided exactly the type of information I was looking for but had not been able to find myself."

"The library services have supported me through my study, given me confidence and also helped me to find resources which support excellent patient care"

"The search saved me time so I was able to utilise this seeing patients in my clinical nurse specialist role."

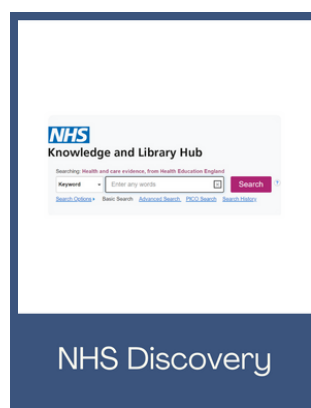


RESOURCES



The Library & Knowledge Service provides access to all the key resources, in print and online. Information and links are available on our website.

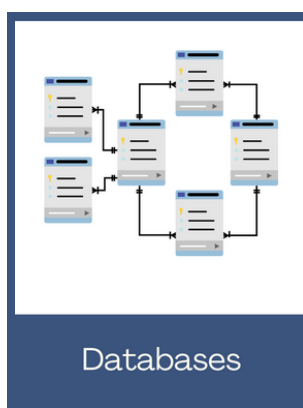
WWW.EASTCHESHIRENHSLIBRARY.NET



NHS Discovery

The NHS Knowledge & Library Hub allows you to search a wealth of resources from a single platform. Login with your NHS Athens account.

<https://library.nhs.uk/eastcheshire>



Databases

Access to Medline, Cinahl, EMBASE and other key databases. Training and support is available, or we can conduct work-related searches on your behalf. NHS Athens access.

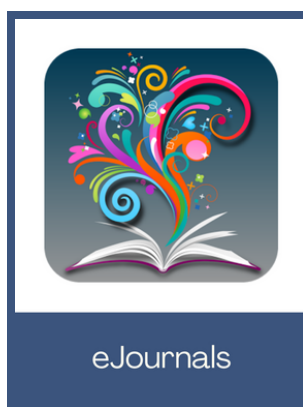
www.eastcheshirenhslibrary.net/databases.html



Library Catalogue

Search our catalogue to see which books, e-books and educational games are available to borrow. Login to view and renew your loans.

<https://now.koha-ptfs.co.uk>



eJournals

All our journals are online - browse our collection with BrowZine. Read the latest table of contents and link to the full-text. Login with your NHS Athens account.

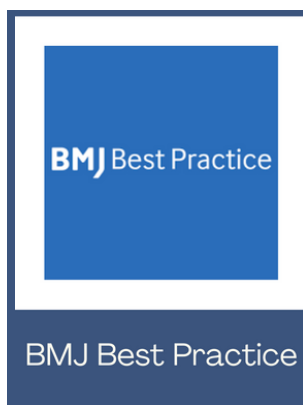
www.browzine.com/libraries/1293



UpToDate

UpToDate is a clinical decision support tool. Login via the Start menu link on-site to create your free personal account, or login with your Athens account.

www.uptodate.com



BMJ Best Practice

BMJ Best Practice is a clinical decision support tool available to all NHS staff. Login with your NHS Athens account.

<https://bestpractice.bmj.com>



<https://bit.ly/oxford-ebooks>

www.rmmonline.co.uk

<https://pubmed.ncbi.nlm.nih.gov/?otool=jgbmhkslib>

www.tripdatabase.com

www.cochranelibrary.com

<https://bnf.nice.org.uk>
<https://bnfc.nice.org.uk>

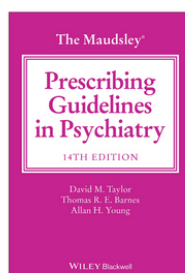
RESOURCES



Medusa

Medusa is the injectible medicines guide used at East Cheshire NHS Trust. Access it online on trust PCs via the Start menu.

www.eastcheshirenhslibrary.net/prescribing.html



The Maudsley

Access the full-text online with your NHS Athens account.

<https://bit.ly/maudsley>

BMJ Case Reports

BMJ Case Reports

Read and submit case reports. Contact the library for more information.

<https://casereports.bmj.com>

BMJ Learning

BMJ Learning

Access hundreds of interactive, online e-learning modules and videos. Login with your NHS Athens account.

<https://learning.bmj.com>

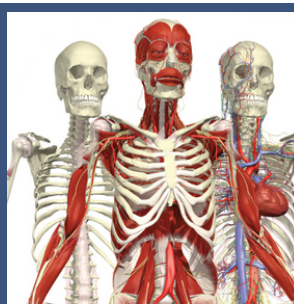
LibKey Nomad
Discovery starts everywhere.

LibKey Nomad connects your library's resources with scholarly articles you find in PubMed, Wikigolia and hundreds of Scholarly Publisher Websites.

LibKey Nomad

LibKey Nomad is a free web browser extension which provides quick, easy access to our full-text content.

www.eastcheshirenhslibrary.net/libkey.html



Anatomy.tv

Anatomy TV provides interactive 3D models as well as text, slides and video clips. Login with your NHS Athens account.

www.anatomy.tv/login

WWW.EASTCHESHIRENHSLIBRARY.NET



RESOURCES



NHS Athens

A lot of resources are only available to subscribers. An Athens username and password is the key to unlocking access to our resources. Athens accounts are free to set up and use, click the link below to set yours up today!

<https://openathens.nice.org.uk>



EDUCATIONAL GAMES

The library has a range of educational board games available to borrow. Great for team meetings & training!

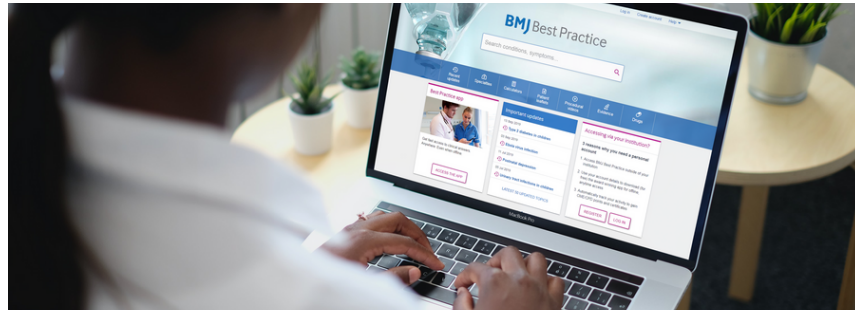


12 laptops are available for staff and learners to borrow, along with headsets and webcams.

LAPTOPS & EQUIPMENT

WWW.EASTCHESHIRENHSLIBRARY.NET

SERVICES



Training

Free one-to-one or small group training sessions are available for all staff - learn how to make the most of the resources and improve your skills. Current courses:

- Overview of online library resources
- Advanced evidence searching
- Study and research skills
- Introduction to critical appraisal
- How to do a systematic review
- Using social media in the workplace
- Basic IT skills support

www.eastcheshirenhslibrary.net/training.html

"My knowledge has increased and given me the confidence to inform other members of staff around best practice guidelines. Being able to access these resources enables me to reflect on my practice and ensure it is constantly evolving."

Evidence Search Service

We provide evidence and literature search services, free of charge, to save you time and ensure that you have the information you need. This service is available to all East Cheshire NHS Trust staff to support best practice in the workplace, management decisions and the improvement of patient outcomes.

Let us use our knowledge and expertise to find evidence to help you deliver evidence based patient care, answer clinical questions, support research, guideline development, service development and management decisions. Complete the online form and let us know what information you need and when you need it by. We will do the searching for you!

www.eastcheshirenhslibrary.net/evidencerequest.html

Enquiry Service

The library staff are here to help you use the library services and resources, and to help you find the information you need for your work and education. Get in touch to discuss how we can help you!

"The evidence search assisted me greatly. The fact that the library could offer this service meant that it saved me time, allowing me to spend more time out on the ward area and also providing a more extensive search."

WWW.EASTCHESHIRENHSlibrary.NET



SERVICES

Wellbeing

The library isn't just for work-related resources. We also have a great fiction collection to support staff wellbeing. We run different reading challenges throughout the year to promote the proven benefits of reading for pleasure. There is also a collection of self-help books and the books on prescription collection.



Book club

We meet once a month at lunchtime and all trust staff are welcome to join. Get in touch for more details!

Study facilities

PCs and study facilities, as well as collaborative work areas and individual and group pods.



"Thank you for the help you have given me in sourcing difficult to find articles for my current work-related research project. Articles were found more quickly than I thought they would be and I am extremely grateful."

Inter-Library Requests

Any books or journal articles which aren't available from our collections can usually be obtained for you from other libraries. Let us know what you need and we will use our networks to source them!

WWW.EASTCHESHIRENHSLIBRARY.NET

KEEPING UP-TO-DATE



Bulletins & Updates

The library produces a range of monthly bulletins and bi-annual updates on a variety of topics and clinical specialties. A full list is available on the library website: www.eastcheshirenhslibrary.net/keep-up-to-date.html

"These are a really accessible and easy way to keep up to date with developments in the field. There are articles I would have missed without these updates & I always advise my colleagues to set them up"



KnowledgeShare

KnowledgeShare is our targeted current awareness service. We'll let you know when we find high-impact publications in your area, including guidelines, policy and high-level research evidence. Alerts are emailed out every fortnight. Your KnowledgeShare profile can be created to be as broad or specific as you need, and can be updated if your interests change. For example, you could receive all alerts on obstetrics or limit to only items related to gestational diabetes. KnowledgeShare contains summarised evidence; you will not be inundated with primary research articles. Sign up today!

www.eastcheshirenhslibrary.net/knowledgeshare.html

Database alerts

Create and run an evidence search in one of the databases (e.g. Medline, Cinahl, etc). When you save the search you can create an alert. You will then receive automatic updates to the search results at regular intervals. For complex clinical or professional interests this is a good way to keep your updates very specific.

Get in touch for help to set up alerts!

Twitter

Follow the Library on Twitter and keep up-to-date with news from the library and relevant health news stories.

<https://twitter.com/TheStaffLibrary>

"I learn a lot from all the updates that I read and receive. It's free, brilliant to keep skills and knowledge up-to-date!"

MEET THE TEAM



ALISON THORNLEY
Library & Knowledge Service Manager

Ask Alison about any aspect of the Library, including stock suggestions, comments and to discuss how the Library could support you and your team.

Email: alison.thornley2@nhs.net
Tel: 01625 661362

<<VACANT>>
eResources Librarian

Ask about NHS Athens, using any of the electronic resources, basic IT skills support, or general library support.

Email: ecn-tr.stafflibrary@nhs.net
Tel: 01625 661362



HOLLY COOK
Clinical Librarian

Ask Holly about training, evidence searches or contact her to discuss how the Library can support your information needs.

Email: holly.cook3@nhs.net
Tel: 01625 663398



SUE CAMP
Library Assistant

Ask Sue about your books loans, inter-library requests, joining or using the Library.

Email: susan.camp2@nhs.net
Tel: 01625 661362



CONTACT US

Library & Knowledge Service

East Cheshire NHS Trust
LE&D Hub, 1st Floor, New Alderley House
Macclesfield District General Hospital
Victoria Road
Macclesfield
SK10 3BL

Telephone: 01625 661362 (internal x1362)

Email: ecn-tr.StaffLibrary@nhs.net



<https://twitter.com/thestafflibrary>



www.facebook.com/eastcheshirenhslibrary

WWW.EASTCHESHIRENHSlibrary.NET

"Thank you all so much for your help over the last couple of years. The MSc Advanced Clinical Practice journey was tough but you guys really helped! I'll always be grateful!"

"The library teams specialist support meant that the senior HR team could manage risk and ensure the actions we were taking would have the most impact for frontline staff and support the organisation to maintain essential services through the pandemic."